

JOil Jatropha plantation in Ghana

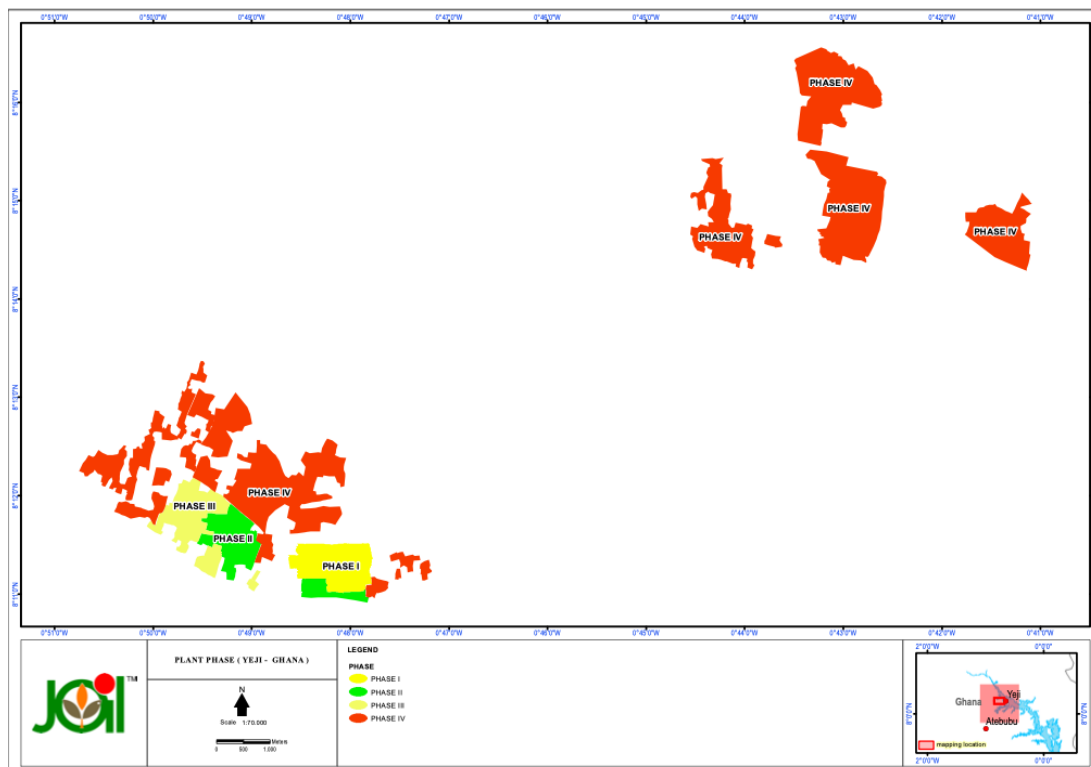
Smart Oil Limited (SOIL) is an agri-business company in Ghana which engaged in Jatropha plantation at Yeji in the Brong Ahafo Region of Ghana. SOIL is fully owned by JOil Africa Pte Limited, Singapore which operates green chemistry and sustainable by-products. SOIL and JOIL aim to expand its plantation activities to enhance carbon sequestration as it is one of the climate mitigation solutions and improve the land use of open shrublands. Furthermore, SOIL and JOIL mission to create jobs in rural areas and improve the lives of communities impacted through plantation activities and sustainable production of biofuels. SOIL has been implementing the project since 2012 by registration of the lease of farmland for Jatropha plantation. Later, the involvement of local communities is increased through project activities such as land preparation, nursery development and plantation.

Project objectives

1. To mitigate the climate change through carbon sequestration in Jatropha curcas plantation
2. To work with communities and related stakeholders in and nearby the plantation areas for the implementation of activities that bring livelihood benefits to local communities.
3. To generate carbon credits certification under Gold Standard

Project locations

JOil Jatropha plantation project is located in three areas near Yeji in the Brong Ahafo Region of Ghana. It is a rural area about 250 km from Kumasi and 400 km from Accra. The communities involved are Kwaease, Kadua, Gyentidua and Langasi.

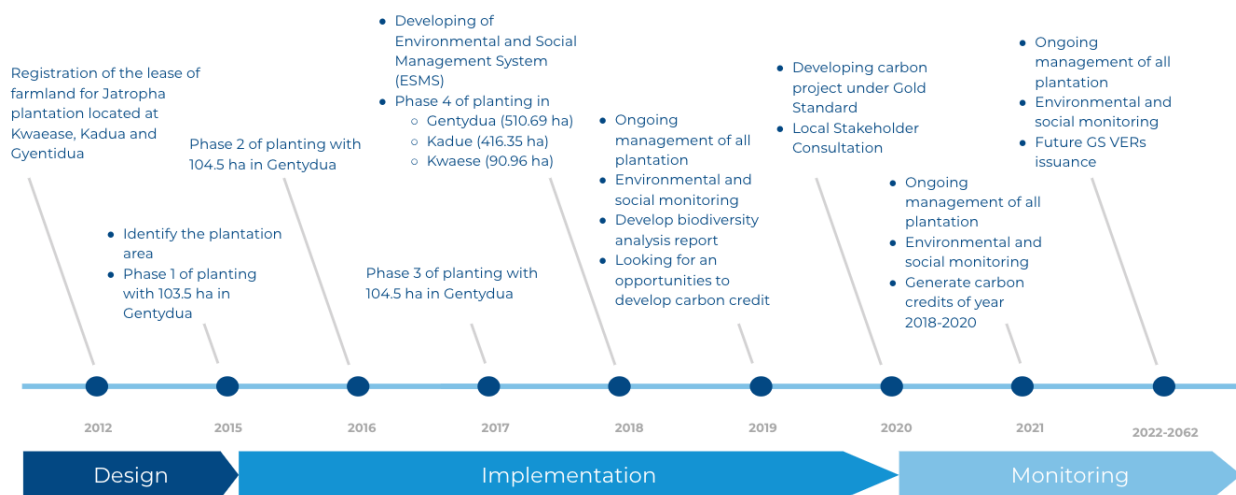


Project targets

1. To plant *Jatropha curcas* in more than 6,000 hectares of nucleus and 14,000 ha of out-growers
2. To offer agriculture employment opportunities in catchment area, especially for women and to employ approximately 1,500 workers in the nucleus farms
3. To respond for education and health through dedicated communities' funds
4. To implement a monitoring system to continually measure all project impacts over the year of 2062.
5. To generate a minimum of 45,000 Gold Standard Verified Emission Reductions through the carbon sequestration of planted trees by 2025

Project timeline

An overview of the proposed project schedule for project implementation comprises three phases that will take the project through design, implementation and monitoring phases over the project lifetime.



Assessment of the potential economic, social and environment impacts

The following are the foreseen impacts in the short and long-term:

1) Economic

- In the long-term, JOil *Jatropha* plantation project will creating jobs and generate additional incomes to local communities

2) Social

- SOIL will conduct a yearly impact assessment (SIA) for a project commissioned and report to the Board of Directors of SOIL, committee and relevant stakeholders
- Community health, safety and security risks will be identified, evaluated and managed to ensure the project does not affect the health and safety of community members
- The project will incorporate measures of corporate social responsibility for education and health through dedicated community funds

- Women will be offered agriculture employment opportunities in the catchment area

3) Environmental

- Biodiversity in the project areas will be enhanced through the biodiversity management strategies to ensure that biodiversity impacts are mitigated with strict adherence to the mitigation hierarchy of biodiversity conservation
- Climate change issue will be solved through carbon sequestration in Jatropha trees
- Water bodies will be conserved as the trees consume water from rainfall

For more information, please contact

Smart Oil Limited (SOIL)

Address: Plantation Office behind Pru District Assembly Block Factory 3 P.O. Box 102 Yeji BA
Yeji, Brong Ahafo, Ghana

Email: mark@joil.com.gh

Tel: +233501260525

South Pole

Address: Technoparkstrasse 1, 8005 Zurich, Switzerland

Website: <https://www.southpole.com/>

Email: info@southpole.com

Tel: +41 43 501 35 50